



WEBINAR ON HIGH TEMPERATURE HEAT PUMPS

7 NOVEMBER 2024

Introduction

Nicole Calame, CSD Ingénieurs

Integration of High-Temperature Heat Pumps in Swiss Industrial Processes (HTHP-CH)



IEA HPT Annex 58 / High-Temperature Heat Pumps

<https://heatpumpingtechnologies.org/annex58/>

Supported by

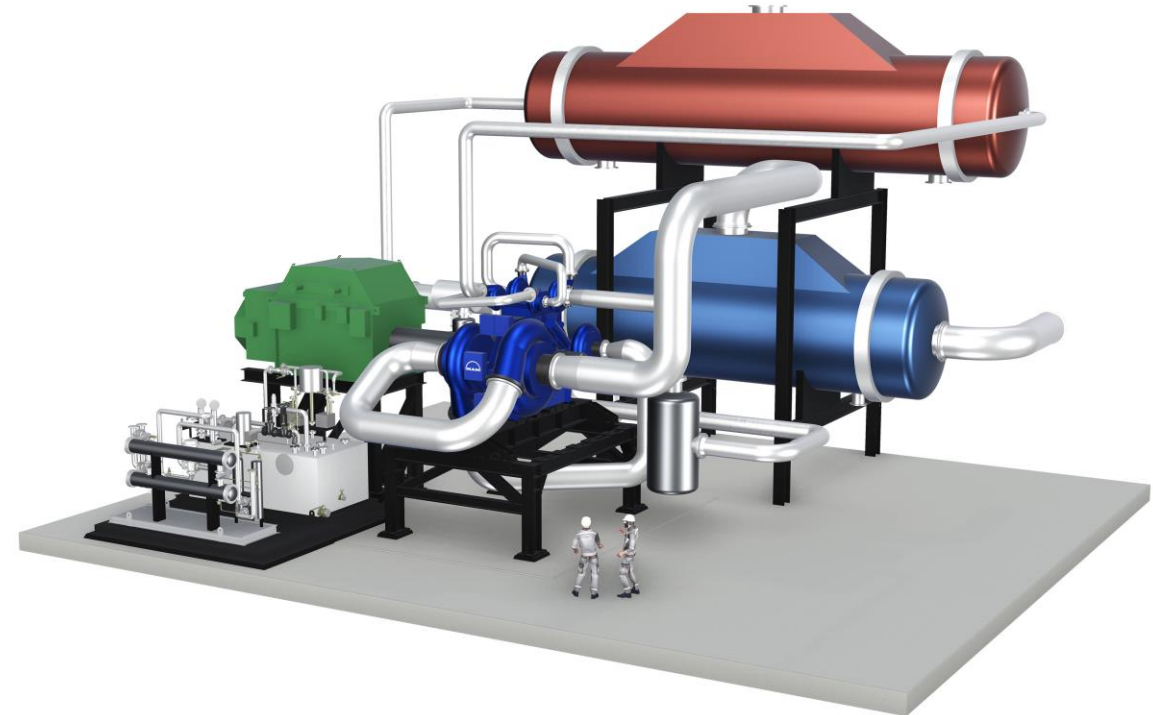
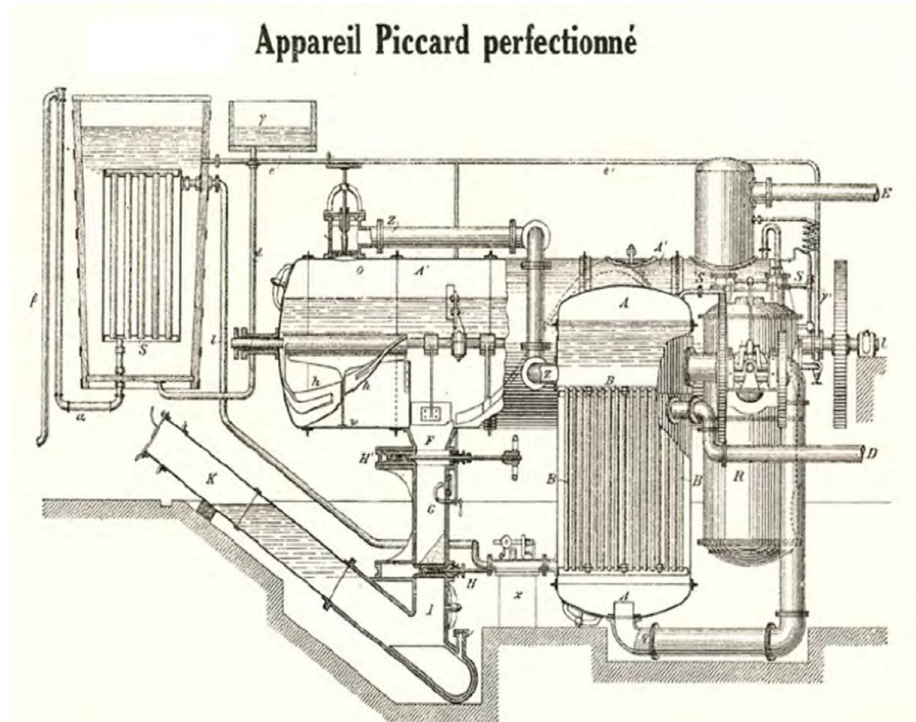


Schweizerische Eidgenossenschaft
Confédération suisse
Confederazione Svizzera
Confederaziun svizra

Swiss Federal Office of Energy SFOE

Introduction

- Heat pumps from 1877 ...



... to 2024

Introduction

- Project Team – Webinar Speakers



Cordin Arpagaus
Senior Research Engineer



Pierre Krummenacher
R&D Project Leader



Nicole Calame
Cheffe de projet en énergie



Daniel A. Flórez-Orrego
Senior Researcher

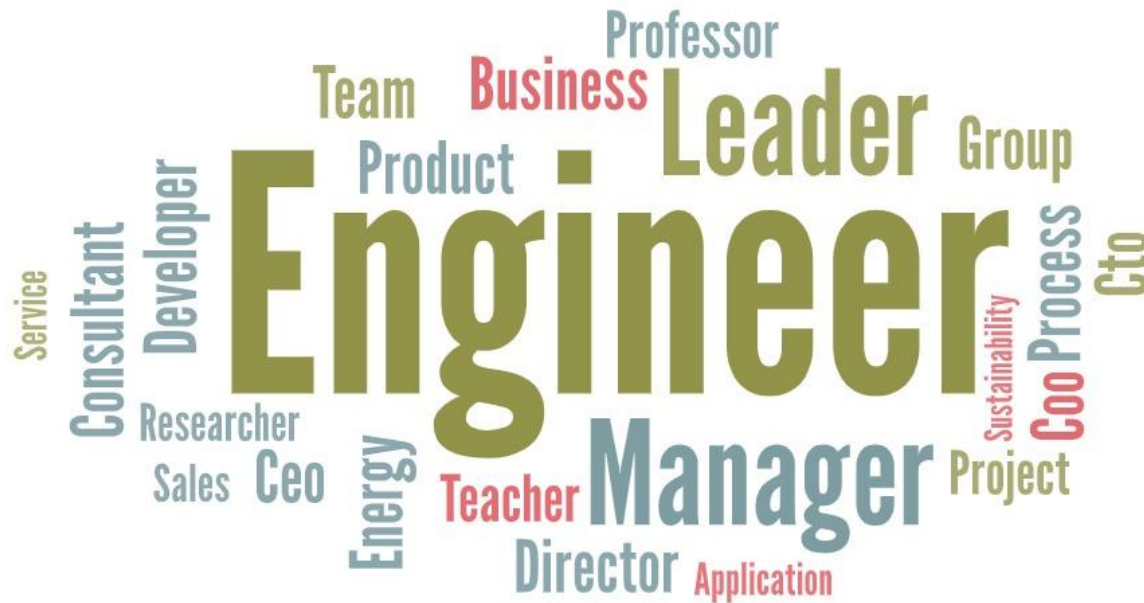
Introduction

- Objectives of the HTHP-CH project
 - Support the deployment of HTHPs in Swiss industries
 - Setup integration concepts based on case studies
 - Develop a solution generation tool
 - Elaborate a guideline for integration in practice
 - Disseminate information on HTHP & Swiss relay of IEA Annex 58
- Industrial partners



Introduction

- More than **300 webinar registrations** from **26 countries** with different backgrounds and functions

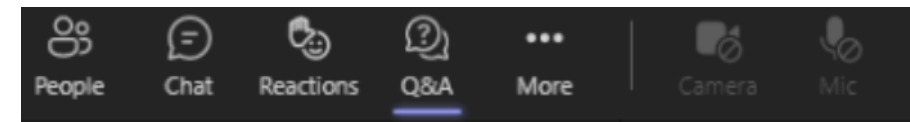


Webinar rules

- **Webinar will be recorded**
 - Video and presentation slides will be available on SWEET DeCarbCH Events Website:
 - [Webinar on Integration of High-Temperature Heat Pumps in Swiss Industrial Processes \(HTHP-CH\): SWEET DeCarbCH](#)
- **Participant microphones and cameras are switched off**
- **Use the Q&A tab to ask questions**
 - Please type speaker name & insert question
 - Answering of questions live after each presentation or via the Q&A tab



Decarbonisation of Cooling and Heating in Switzerland



Webinar on Integration of High-Temperature Heat Pumps in Swiss Industrial Processes (HTHP-CH)

- 8:30 – 8:35 **Introduction** (Nicole Calame, CSD)
- 8:35 – 8:55 **Guideline for HTHP integration** (Cordin Arpagaus, OST)
- 8:55 – 9:15 **Case study ELSA: Integration concept and status** (Pierre Krummenacher, HEIG-VD)
- 9:15 – 9:35 **Case study Cremo: Integration concept and status** (Nicole Calame, CSD)
- 9:35 – 9:55 **Case study Gustav Spiess: Integration concept and status** (Cordin Arpagaus, OST)
- 9:55 – 10:10 *Break (15 min)*
- 10:10 – 10:40 **Web-based integration tool: How to use it and demonstration of case studies** (Daniel Alexander Flórez-Orrego, EPFL)
- 10:40 – 11:10 **Industrial partner feedback round** (ELSA, Cremo, Gustav Spiess)
- 11:10 – 11:30 **Complementary Q&A time** (all)